

Shaping Poole Survey 2011



Shaping Poole Survey 2011 Community Safety Key Findings Safer Poole Partnership Board

28 February 2012

Heather Kitching, Consultation Manager
Corporate Research Team, Strategy Team, Borough of Poole

Summary Findings



Overall, the headline results paint a positive picture:

- Improved perceptions of all local public services
- Increased public confidence with community safety issues, particularly in dealing with crime and anti-social behaviour
- Improved feeling of safety in the local area

However not all ages, population groups and areas of Poole have the same experiences.

Generally, females are more positive than males; older age groups are more positive than younger age groups; and those with a limiting illness are less positive ...but there are some exceptions and the main predictors of perceptions of community safety issues are area based.

Survey Methodology



- Partnership Survey carried out every three years
- Place Survey methodology used so results could be compared (postal survey with 2 reminders)
- Random sample of 5,500 addresses (enables analysis by area and population groups)
- 2,265 surveys returned (41% response)

A statistic of 50% with a 2,265 sample size has a 95% confidence interval of +/-2.1%

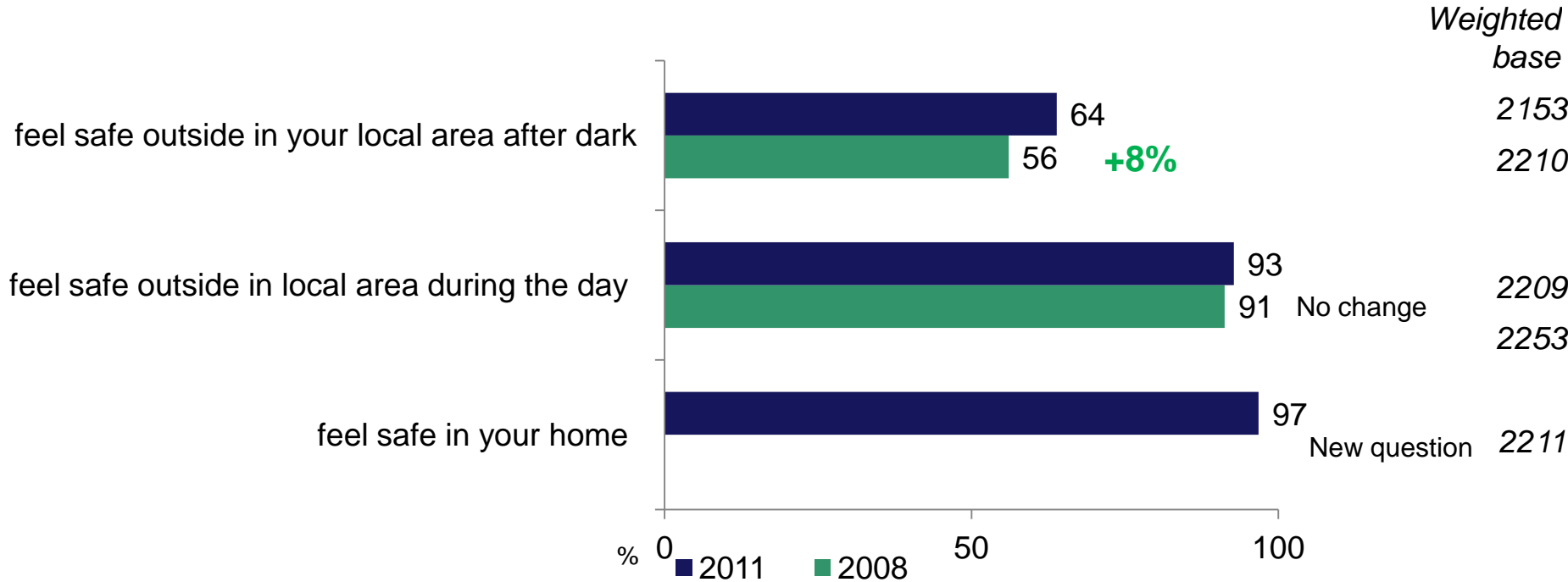
- Respondents weighted by age and gender to make them representative of Poole
 - 2008 data re-weighted to make results comparable. As a result some figures vary e.g. safer neighbourhoods.

Perceptions of Poole and Local Public Services



- 87% of residents are satisfied with the local area as a place to live
- Perceptions of local public services have increased since the 2008 Survey:
 - 77% of respondents are satisfied with the Police (+10%)
 - 93% are satisfied with Dorset Fire and Rescue (+7%)
- 78% of respondents feel that local public agencies are working to make the area safer (+4%)

Q21 Feeling of safety

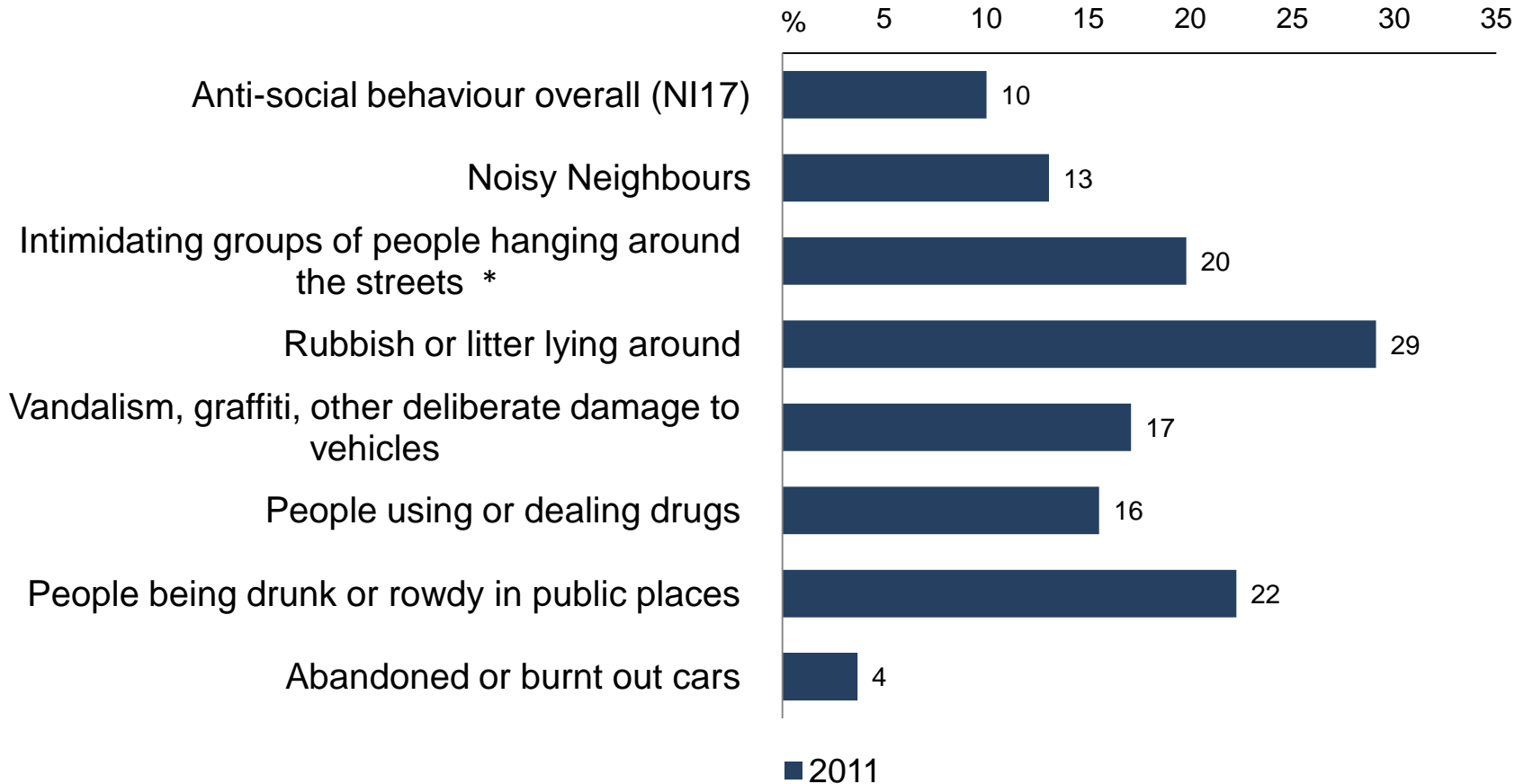


- Feelings of safety during the day remains high (93%)
- Feeling of safety after dark has improved since 2008 (+8%)

Q23 Anti-social behaviour



There is a problem in the local area with...

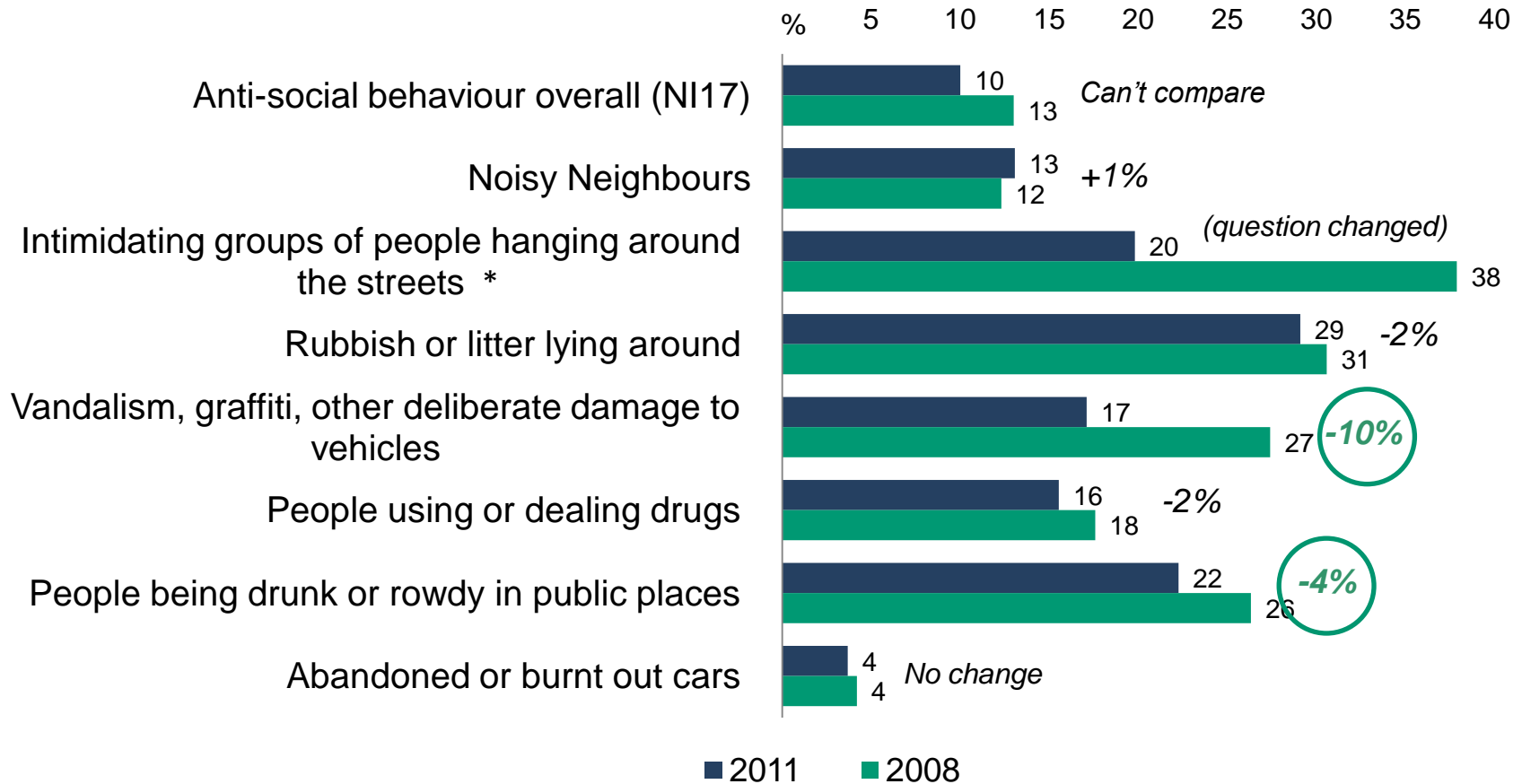


* Question changed from 'groups of teenagers' to 'intimidating groups of people' hanging around the streets.

Q23 Anti-social behaviour

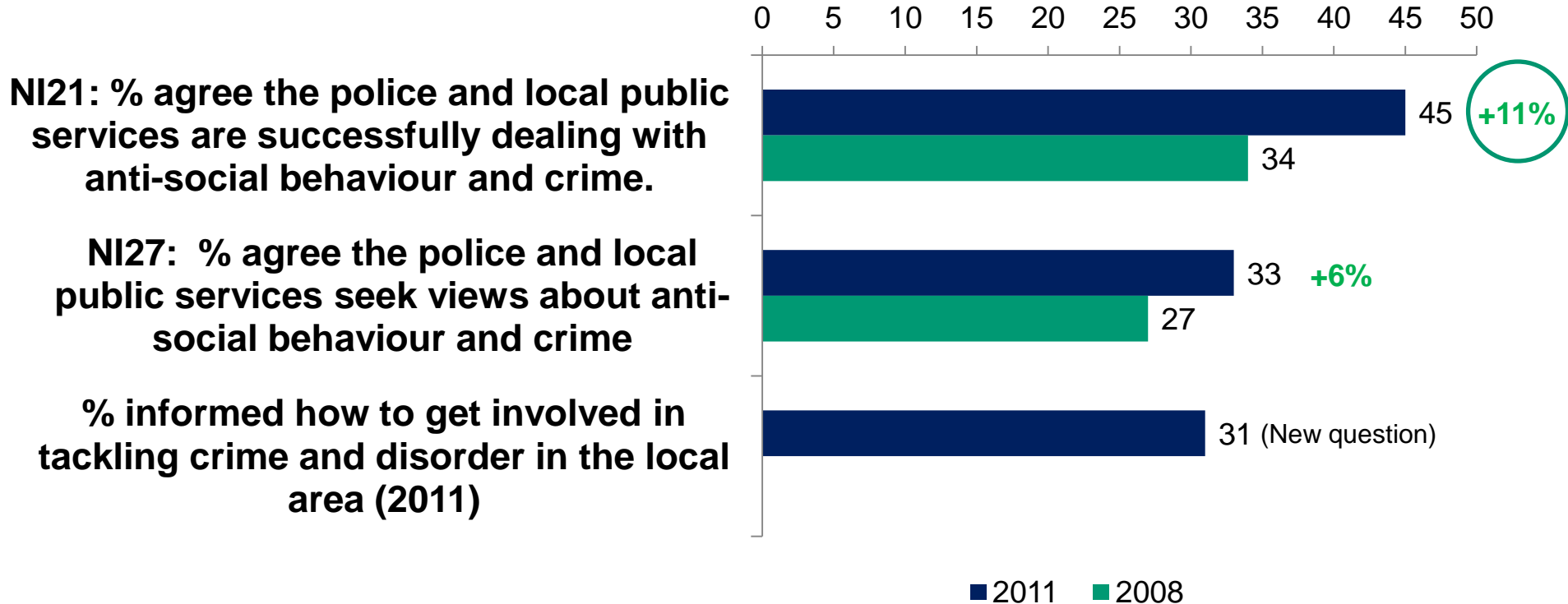


There is a problem in the local area with...



* Question changed from 'groups of teenagers' to 'intimidating groups of people' hanging around the streets.

Perceptions of Community Safety



Perceptions of dealing with anti-social behaviour and crime have improved considerably since 2008, with significant improvements across all Safer Neighbourhood Areas

Perceptions of anti-social behaviour (differences by age)



% who feel there is a problem in their local area with...	Age							Total
	18-34	35-44	45-54	55-64	65-74	75-84	85+	
...anti-social behaviour	14%	11%	11%	11%	8%	4%	2%	10%
...people using/dealing in drugs.	18%	14%	19%	15%	13%	9%	5%	15%
...people being drunk/rowdy in public places.	31%	23%	26%	20%	16%	9%	10%	22%
...noisy neighbours	17%	16%	14%	13%	8%	8%	1%	13%
...intimidating groups of people hanging around the streets*	26%	20%	23%	19%	13%	9%	13%	20%
...rubbish or litter	35%	27%	30%	29%	26%	26%	15%	29%
% agree the police and local public services seek views about anti-social behaviour and crime	27%	28%	32%	32%	45%	44%	40%	33%
% agree the police and local public services are successfully dealing with anti-social behaviour and crime	43%	38%	41%	44%	56%	56%	56%	45%
Feel safe when out and about in the local area at night	65%	69%	64%	66%	62%	55%	49%	64%

Perceptions of anti-social behaviour (differences by gender)



	Male	Female	All Poole
Feel safe when out and about in the area after dark	70%	58%	64%
% who feel there is a problem in their local area with people being drunk/rowdy in public places	24%	20%	22%
% who feel there is a problem with rubbish or litter in their local area	32%	26%	29%
Feel that the police and local public services seek views regarding crime and anti-social behaviour	28%	38%	33%
Feel that the police and local public services are dealing with crime and anti-social behaviour in their local area	42%	49%	45%

Perceptions of anti-social behaviour (differences by long term limiting illness)



	Long term illness or disability		All Poole
	No	Yes	
Feel safe when out and about in the area after dark	70%	49%	64%
Feel safe when out and about in the area during the day	95%	87%	93%
% feel there is a problem in their local area with...			
...anti-social behaviour	9%	14%	10%
...people using/dealing in drugs.	14%	19%	15%
...noisy neighbours	12%	16%	13%
...intimidating groups of people hanging around the streets	18%	23%	20%
...vandalism	15%	22%	17%
...abandoned cars	3%	6%	4%
Feel that the police and local public services seek views regarding crime and anti-social behaviour	32%	36%	33%

Differences by Safer Neighbourhood Areas

2011	Hamworthy East, Hamworthy West	Poole Town and Oakdale	Parkstone, Penn Hill and Canford Cliffs	Newtown, Branksome East and Branksome West	Alderney	Creekmoor and Canford Heath East & West	Broadstone and Merley & Bearwood	Poole
% think there is a problem in their local area with...								
...anti-social behaviour (Based on answers to 7 questions.)	14%	19%	5%	12%	10%	10%	1%	10%
...people being drunk/rowdy in public places	23%	37%	20%	25%	15%	19%	8%	22%
...people using/dealing in drugs	22%	24%	11%	17%	14%	17%	4%	15%
...noisy neighbours	23%	20%	10%	12%	15%	11%	5%	13%
...intimidating groups of people hanging around the streets	22%	28%	10%	24%	29%	23%	12%	20%
...vandalism, graffitti and deliberate damage	21%	23%	10%	27%	19%	15%	9%	17%
...rubbish or litter	33%	34%	22%	34%	39%	35%	15%	29%
% agree the police and local public services seek views about asb and crime.	46%	28%	27%	30%	27%	37%	43%	33%
% agree the police and local public services are successfully dealing with asb and crime.	57%	38%	44%	39%	37%	51%	54%	45%
% feel safe in the local area after dark	64%	59%	74%	56%	50%	55%	78%	64%
% feel safe in the local area during the day	89%	89%	97%	91%	87%	93%	98%	93%
% feel safe at home	99%	93%	98%	95%	95%	98%	99%	97%

Colour code:  the "best" area  significantly better area/s  the "worst" area  significantly worse area/s

Significant changes by Safer Neighbourhood Areas (2008 – 2011)



Differences (2008-2011)	Hamworthy East, Hamworthy West	Poole Town and Oakdale	Parkstone, Penn Hill and Canford Cliffs	Newtown, Branksome East and Branksome West	Alderney	Creekmoor and Canford Heath East & West	Broadstone and Merley & Bearwood	Poole
% think there is a problem in their local area with...								
...anti-social behaviour (Based on answers to 7 questions.)	-4%	7%	-3%	-8%	-9%	-2%	-7%	-3%
...people being drunk/rowdy in public places	-8%	2%	-2%	-8%	-18%	-1%	-8%	-4%
...people using/dealing in drugs	-4%	5%	-3%	-4%	-7%	3%	-11%	-3%
...noisy neighbours	8%	9%	-1%	-7%	-8%	3%	-1%	1%
...intimidating groups of people hanging around the streets*	-20%	-10%	-13%	-19%	-27%	-19%	-26%	-18%
...vandalism, graffiti and deliberate damage	-16%	-1%	-7%	-7%	-19%	-15%	-17%	-10%
...rubbish or litter	-9%	5%	%	-4%	4%	2%	-8%	-1%
% agree the police and local public services seek views about anti-social behaviour and crime.	17%	-1%	1%	12%	4%	7%	7%	6%
% agree the police and local public services are successfully dealing with asb and crime.	20%	7%	10%	14%	12%	11%	10%	11%
% feel safe in the local area after dark	10%	%	9%	14%	12%	-4%	13%	8%
% feel safe in the local area during the day	-1%	-5%	3%	7%	3%	1%	2%	1%

= Statistical significant improvements

= Statistically significant decreases

Note as there are small sample sizes for safer neighbourhood areas the actual % value could fall within a wider range.

Questions

For Further Information



Heather Kitching
Consultation Manager
Corporate Research Team
Borough of Poole
Civic Centre, BH15 2RU

Tel: 01202 633354

Email: h.kitching@poole.gov.uk

www.boroughofpoole.com/opinions - our research and consultation results and on-line consultations

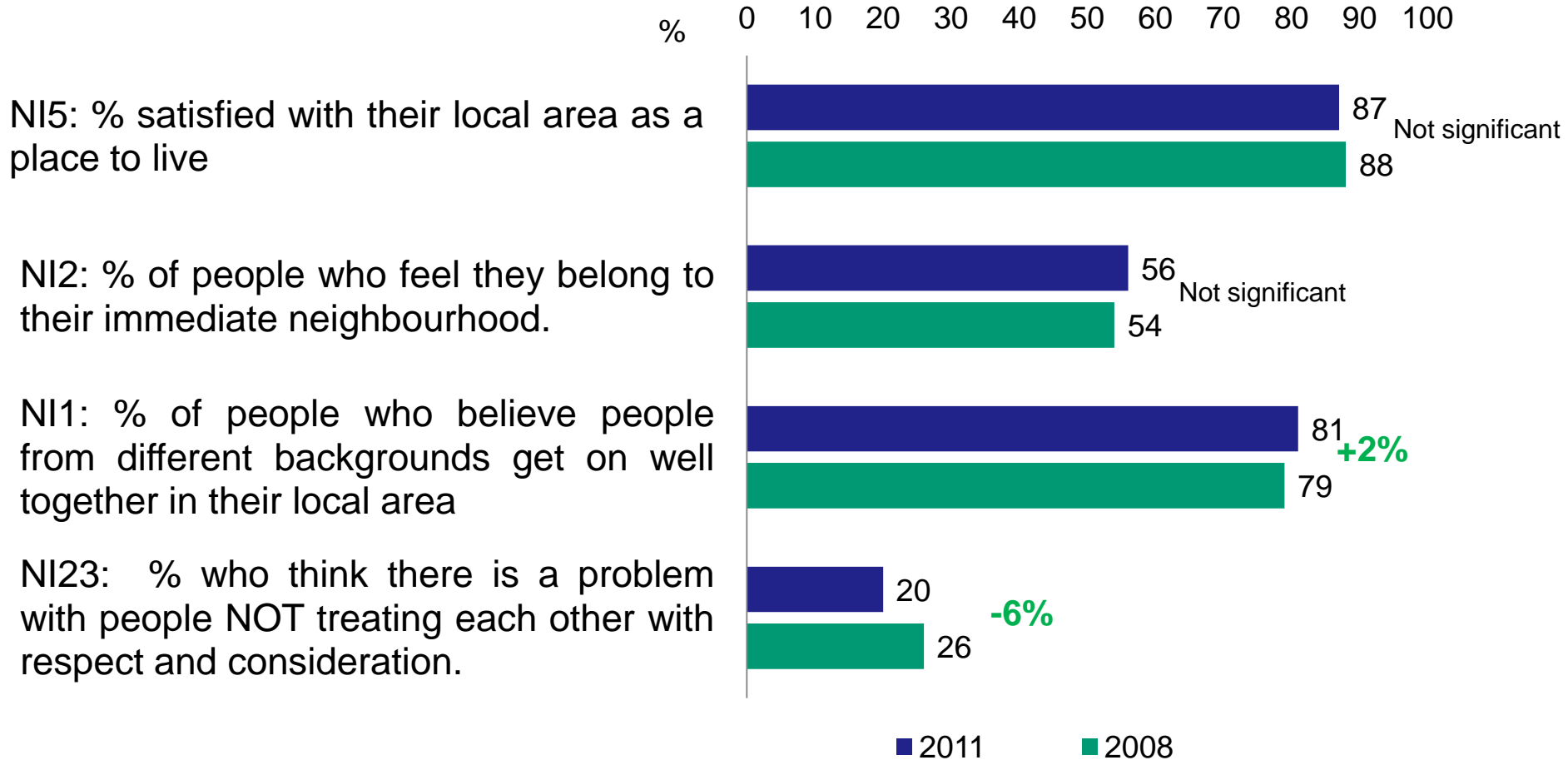
www.boroughofpoole.com/statistics - Poole statistics on-line

www.boroughofpoole.com/yourpoole - our on-line mapping service

Supporting analysis

The following slides are provided for additional information

Community Cohesion indicators

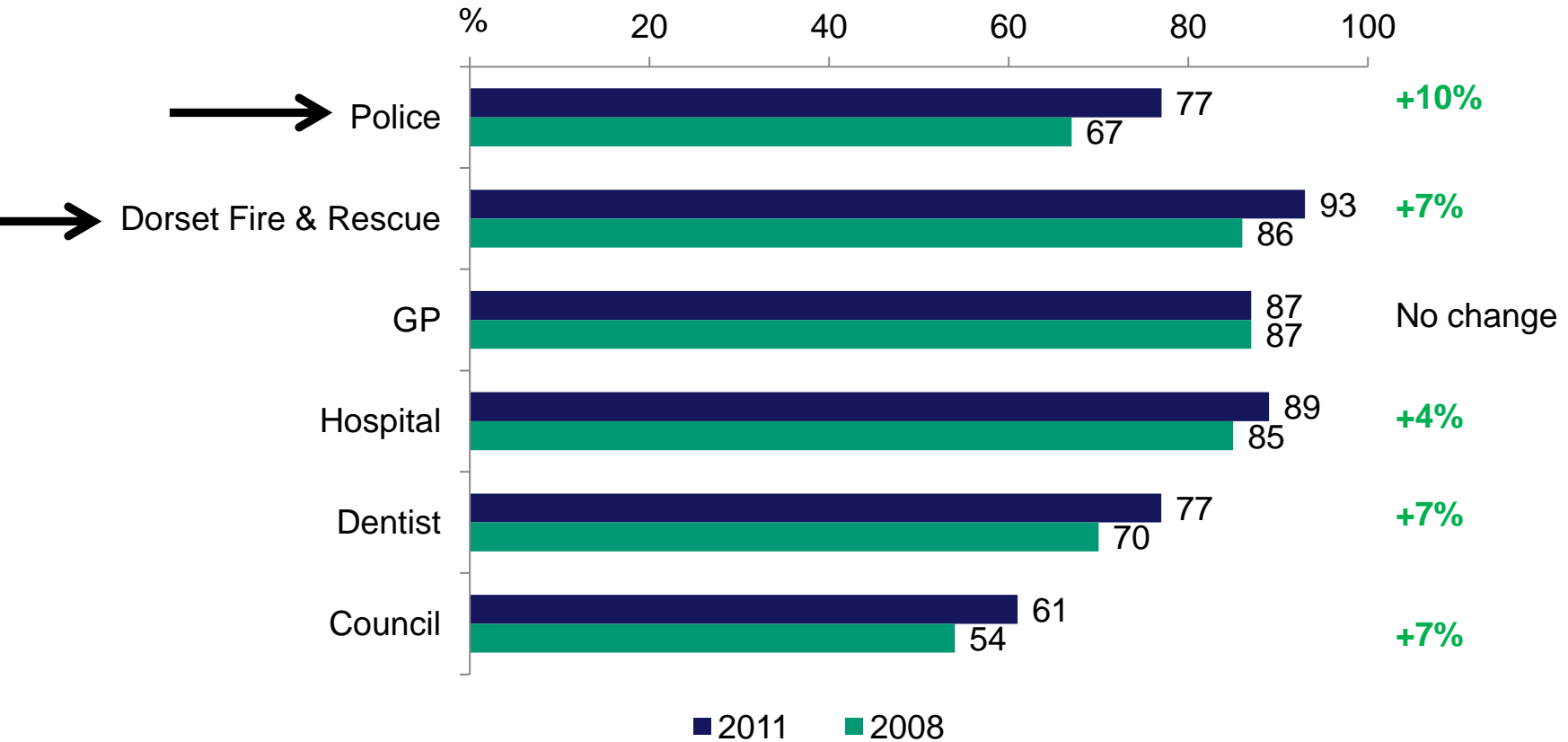


Local area = 15-20 minutes walking distance from your home

Satisfaction with Local Public Services



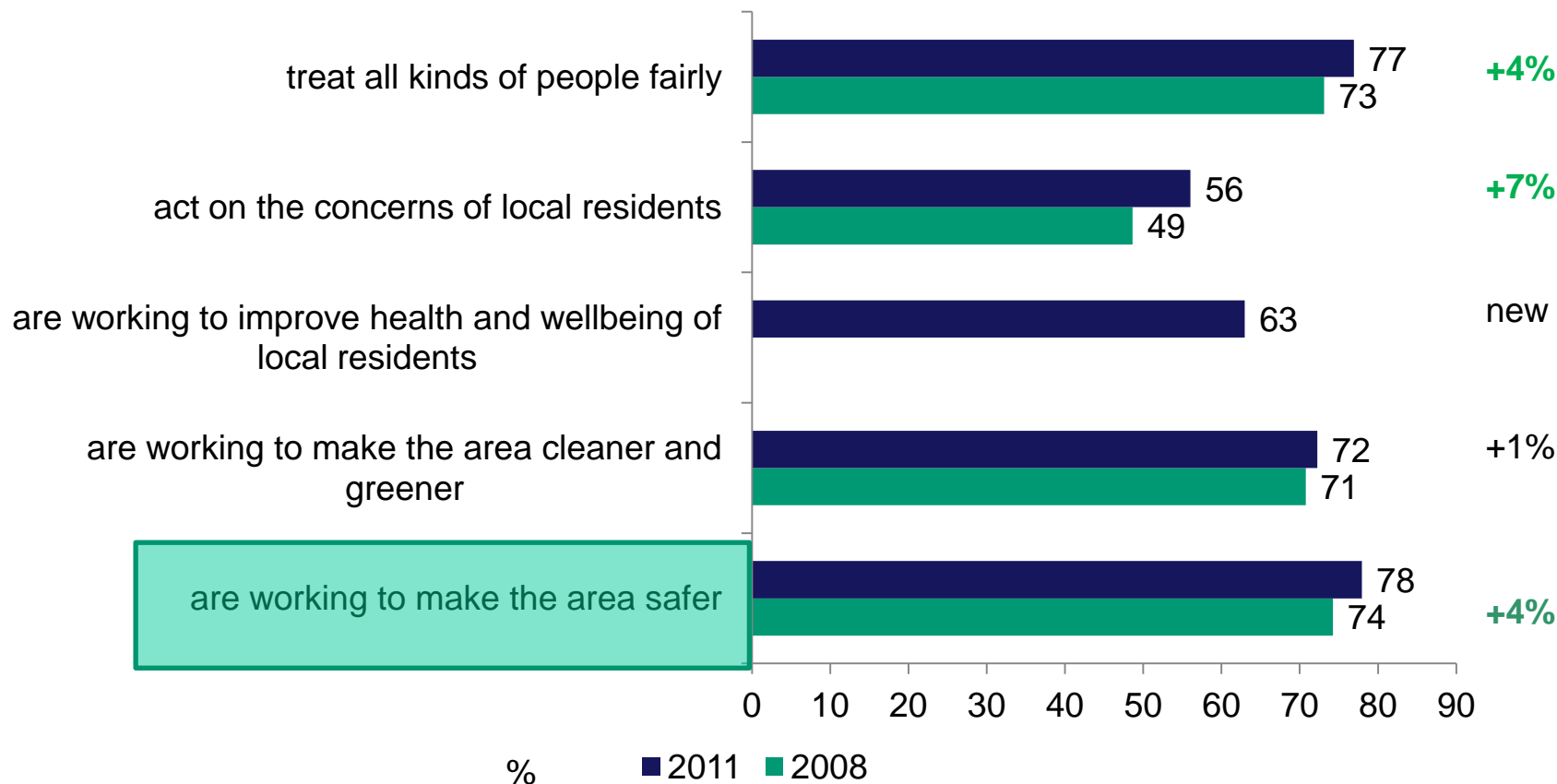
Satisfaction with local public services



Perceptions of Local Public Services



Local public services...



- 78% of residents feel that local public agencies are working to make the area safer (increase of 4% since 2008)

Anti-social behaviour – noisy neighbours



Ward and age are the main predictors of this indicator.

Key Predictor Ward	Secondary Predictor Age	2011 %
Poole		13
Broadstone, Creekmoor, Merley and Bearwood, Canford Cliffs, Branksome East, Branksome West, Canford Heath West, Penn Hill.		6
Oakdale, Canford Heath East, Newtown, Parkstone, Hamworthy West, Alderney...	...and those aged 18-45	22
	...and those aged over 45	12
Poole Town, Hamworthy East.		25

Anti-social behaviour – people dealing or using drugs



Ward is the key predictor of this asb indicator.

Key Predictor Ward	2011 %
Poole	16
Broadstone, Merley and Bearwood and Canford Cliffs	5
Creekmoor, Parkstone, Branksome East, Branksome West, Alderney, Penn Hill, Canford Heath East, Oakdale, Hamworthy East	13
Poole Town, Canford Heath West, Hamworthy West, Newtown	30

Anti-social behaviour – vandalism, graffiti and other deliberate damage to property



Adult locality area, age and gender are the main predictors of this indicator.

Key Predictor Adult Localities	Secondary Predictor Age	Third Predictor Gender	2011 %
Poole			17
North, Westbourne			10
Central, Parkstone...	...and those living in Branksome East, Hamworthy East, Alderney, Oakdale		17
	...and those living in Poole Town, Branksome West, Hamworthy West, Newtown, Canford Heath East	Female	24
		Male	34

Anti-social behaviour – people being drunk or rowdy in public places



Adult locality and age are the main predictors of this asb indicator.

Key Predictor	Secondary Predictor	2011 %
Adult Localities	Age	
Poole		22
North		11
Westbourne, Parkstone...	...and those aged 18-39	29
	...and those aged 40-63	23
	...and those aged over 63	11
Central		33

Anti-social behaviour – intimidating groups of people hanging around the streets



IMD quartile and ward or age are the key predictors of this indicator.

Key Predictor IMD Quartile	Secondary Predictor Ward or Age	2011%
Poole		20
Quartile 4		10
	...and those living in Creekmoor, Parkstone, Canford Cliffs, Branksome East, Branksome West, Hamworthy West and Penn Hill	8
Quartile 3...	... and those living in Poole Town, Oakdale, Canford Heath East, Canford Heath West and Hamworthy East	26
Quartile 1 and 2...	...and those aged 18-51	37
	... and those aged over 51	21

Feeling of safety at night (Key predictors)



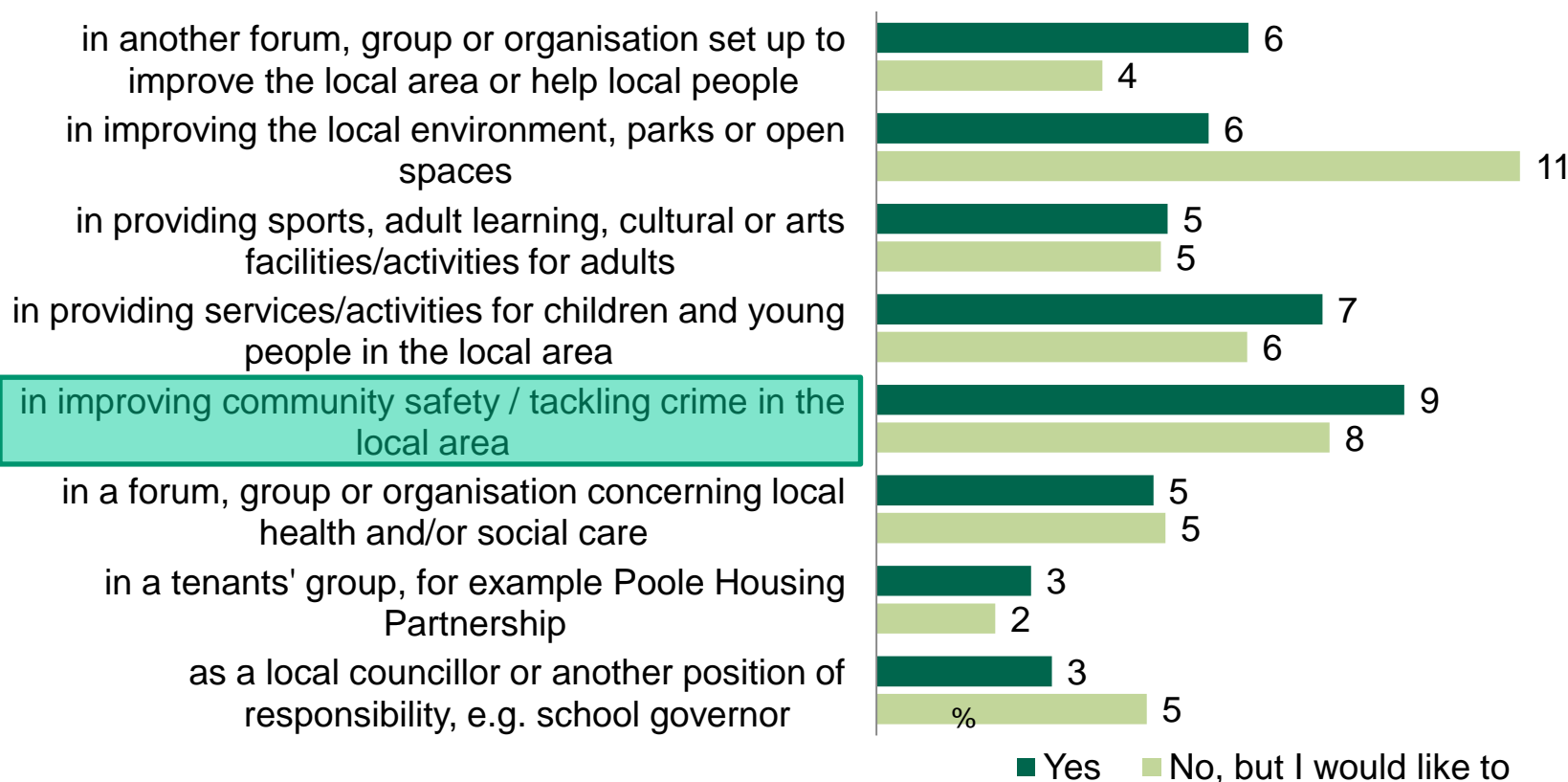
Key Predictor	Secondary Predictor	Percent
General Health	Safer Neighbourhood Area or Gender	
Borough of Poole		64
Very Good	Parkstone, Penn Hill and Canford Cliffs; Broadstone, Merley and Bearwood	86
	Alderney, Creekmoor and Canford Heath East and West; Hamworthy East and West; and Poole Town and Oakdale	64
Good	Male	76
	Female	59
Fair, Bad and Very Bad		47

Getting involved in local forums, groups or organisations in the local area



- 27% are involved in groups that affect or deliver services in the local area.
- A further 16% would like to get involved.
- 24% feel informed about how to get involved.

In the past 12 months have you been involved...



Weighted base = 2205